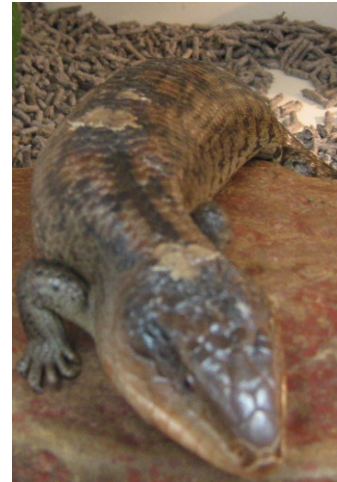


Congratulations on the purchase of your new BLUE TONGUE LIZARD from Passion for Pets

You can expect many years of enjoyment from these new and unusual pets. To assist you with this and to help you give the best of care to your new blue tongue we have provided the following information.

WHAT YOU NEED FOR A BLUE TONGUE LIZARD

- A tank and critter lid or a reptile enclosure with thermostat and bulb sockets
- An infra-red spot lamp
- A heat mat - glass tanks only
- A thermometer
- An UVB reptile tube
- A reflector
- Rocks
- A hollowed log
- 2 reptile dishes
- Breeders Choice litter



SETTING UP YOUR TANK OR ENCLOSURE

STEPS TO SETTING UP YOUR TANK/ENCLOSURE

1. Choose a location for your blue tongue's home.
2. If you have chosen a glass tank, place your heat mat in one corner of your tank.
3. Cover the bottom of your tank/enclosure with the breeders choice litter.
4. Rinse your rock and hollowed log, then position them in your tank/enclosure. Keep in mind that your blue tongue will like to hide inside the log. If you position it correctly you will be able to still see your blue tongue whilst it's hiding.
5. Rinse your reptile dishes and fill one with water and the other with food. Now place these inside your tank/enclosure. Be careful not to place these too close to the heat source.



Passion for Pets
544 Frankston ~ Dandenong Road
Carrum Downs, Victoria
Tel: 03 9775 1361
Fax: 03 9775 1232
www.passionforpets.com.au

6. Position your UVB light so that it sits across the top of your tank. In a glass tank position your infrared spotlight in the same corner as the heat mat, otherwise connect the infra-red spotlight in the socket provided.
7. Place your thermometer on the side of your tank under the infrared spotlight.
8. Now add your blue tongue.

PURCHASING YOUR BLUE TONGUE

Your Passion for Pets staff member will help you with your selection of a blue tongue. You can keep 1-3 Sub Adult blue tongues in a tank that's 80Lx50Wx40H cm.

2 Adult blue tongues require a tank that's 100Lx60Wx60H cm.

SEXING YOUR BLUE TONGUE

Telling the sex of a blue tongue can be difficult even when they are adults. Generally though the female adult tends to be longer, have larger bodies and a smaller narrower head.

You can get your Vet to accurately determine the sex at a younger age.

TEMPERATURE

As blue tongues are cold-blooded animals we need to re-create "their" environment. You should aim to provide your blue tongue with a daytime temperature of about 33 c and overnight temperatures should be considerably lower to simulate a natural 24 hour period. The general rule is not to let the nighttime temperature fall to more than 20 c below the daytime temperature, for example 33 c during the day and 23 c at night.

In winter you can create the correct nighttime temperature by replacing your daytime globe with a lesser wattage globe. Never allow your tank to exceed 35 c.

FEEDING YOUR BLUE TONGUE

Blue tongues will need to be fed daily if they are highly active or newborn. Every three days if they are moderately active and every five days if they are not active. Blue tongues love mashed banana, some stone fruits, strawberries, yogurt, tinned dog food, snails and crickets. Make sure all food is mashed.



Passion for Pets
544 Frankston ~ Dandenong Road
Carrum Downs, Victoria
Tel: 03 9775 1361
Fax: 03 9775 1232
www.passionforpets.com.au

Fresh food must be removed daily and the correct size crickets and snails must be offered. Your friendly Passion for Pets staff member can assist you with this. Your blue tongue needs its water bowls washed and replenished daily.

TANK MAINTENANCE

To keep your blue tongue healthy, you will need to use a litter scoop to remove droppings daily. Once a week you will need to thoroughly clean your tank/enclosure and replace the breeders choice litter. Once every three weeks your will also need to spray your tank/enclosure with mite/lice spray. Always remove your blue tongue before cleaning the tank/enclosure and always use a disinfectant.

BOWLS

Reptile bowls are different from other animal dishes; they must have shallow sides and not be too deep. Your blue tongues bowls need to be washed daily and shouldn't mix with human bowls as blue tongues can carry salmonella. This will only be caught through poor hygiene. Always wash your hands after handling your blue tongue.

LIFESPAN

Blue tongues can live up to between 20 - 30 years. They can grow up to 60cm in length.

BREEDING

Sexual maturity in blue tongues is reached between 1-3yrs of age. There are many books available with extensive details on breeding such as: Keeping BLUE-TONGUE LIZARDS by Grant Turner. This book is available at all Passion for Pets stores.

SKIN-SHEDDING

Blue tongues shed their skin as they grow. The more your blue tongue grows the more it will shed its skin, young blue tongues can shed their skin up to ten times in one year. Once your blue tongue matures into an adult its growth will slow and it will then only shed a couple of times a year. Your blue tongue will require rocks and logs to rub against to remove the skin the only time you may need to help is if the skin has not come away after your blue tongues efforts to remove



Passion for Pets
544 Frankston ~ Dandenong Road
Carrum Downs, Victoria
Tel: 03 9775 1361
Fax: 03 9775 1232
www.passionforpets.com.au

it. In this instance place your blue tongue in a container of lukewarm water (enough to cover all of the body except for the head) for 10 - 20 min, then thoroughly rub dry your blue tongue with a towel, this will remove the difficult skin. Always remove any shed skin immediately.

CONTACT US

Our friendly staff is always available to answer your questions so please don't hesitate to contact us for further information.